

## 23. She Is A Diamond

Slow, gradual accel and cresc

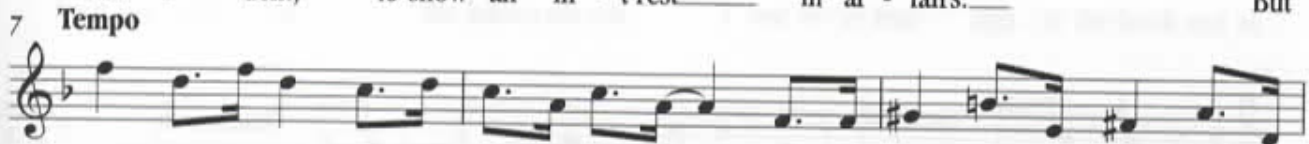
OFFICERS



It's all ver - y well to a cer - tain ex - tent, - for the la - dy at the side of the



Pres - i - dent, to show an in - t'rest in af - fairs. But



let's not be blind to the drift of e - vents, she's e - clips - ing the strength of the



gov - ern - ment she should re - turn to be - low stairs. She will



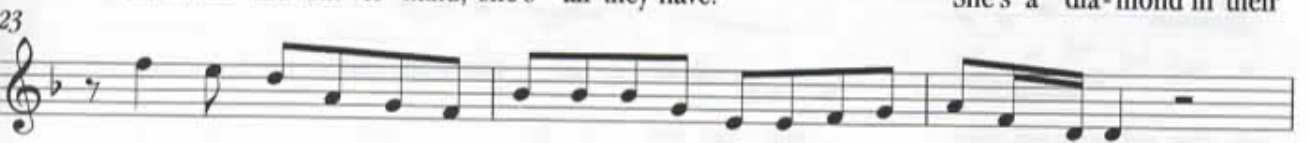
nev - er win our hearts She's a wo - man for a start.

**START HERE!**

no e - lect - ed post She's an orn - a - ment at most.



But on the oth - er hand, she's all they have. She's a dia - mond in their



dull grey lives and that's the hard - est kind of stone, it us - ual - ly sur - vives.



And if you think a - bout it can you re - call the last time they loved an - y - one at all.



She's not a bau-ble you can brush a - side.

She's been out-do-ing what we've



just talked a-bout, ex-am-ple, gave us back our bus-'ness - es, got the Eng-lish out.



And when you think a-bout it, well why not do one or two of the things we



prom-ised to.

But on the oth-er hand she's slow-ing down.



She's lost a lit-tle of that mag-ic drive, but I would not ad-vice those cri-tics pres-ent



to de-ri-ve,

an-y sat-is-fac-tion from her fad-ing star.



She's the one who's kept us where we are. She's the one who's kept you where you are!

OFFICERS